

MV-CH080-60GM/GC

8 MP 4/3" CCD GigE Area Scan Camera



GEN*i*CAM

GigE
VISION

Introduction

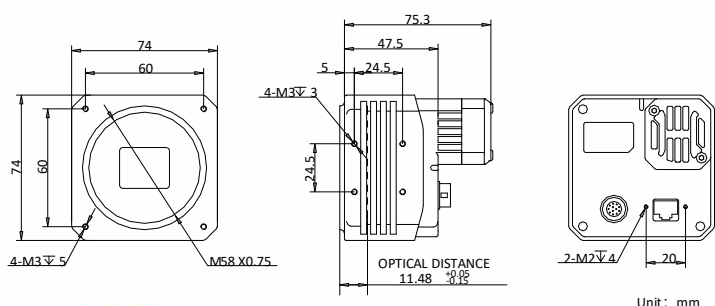
MV-CH080-60GM/GC 8 MP 4/3" CCD GigE Camera is a high quality device that can be used in a variety of applications, including SMT automatic optical detection, PCB AOI, FPD detection, etc.

Key Feature

- High quality CCD sensor with ultra high SNR, wide dynamic range, excellent imaging quality.
- Adopts GigE interface and max. transmission distance of 100 meters without relay.
- Up to 128 MB local memory for burst transmission and retransmission.
- Compact design with mounting holes on the up and bottom panels for flexible mounting.

Dimension

M58-mount with fan:



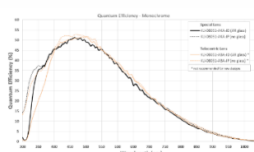
Available Model

- M58-mount with fan, mono camera: MV-CH080-60GM-M58S-NF
- M58-mount without fan, mono camera: MV-CH080-60GM-M58S-NN
- M58-mount with fan, color camera: MV-CH080-60GC-M58S-NF

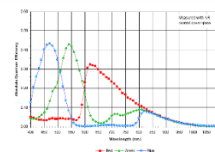
Applicable Industry

SMT automatic optical detection, PCB AOI, FPD detection, railway related applications, etc.

Sensor Quantum Efficiency

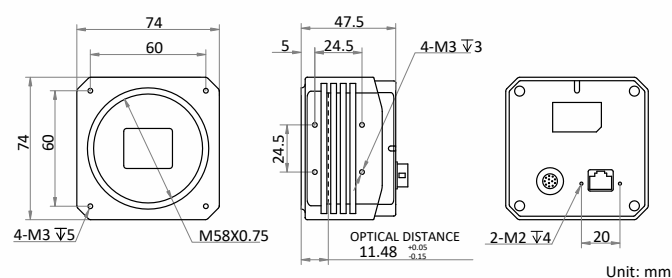


MV-CH080-60GM



MV-CH080-60GC

M58-mount without fan:



Specification

Model	MV-CH080-60GM	MV-CH080-60GC
Camera		
Sensor type	CCD, global shutter	
Sensor model	KAI08051	
Pixel size	5.5 μm × 5.5 μm	
Sensor size	4/3"	
Resolution	3296 × 2472	
Max. frame rate	14 fps @3296 × 2472	
Dynamic range	66 dB	
SNR	40 dB	
Gain	0 dB to 20 dB	
Exposure time	50 μs to 1 sec	
Exposure mode	Off/Once/Continuous exposure mode	
Mono/color	Mono	Color
Pixel format	Mono 8/10/10p/12/12p	Mono 8/10/12, Bayer GR 8/10/10p/12/12p, YUV 422 Packed, YUV422_YUYV_Packed, RGB 8, BGR 8
Binning	Not support	
Decimation	Not support	
Reverse image	Supports horizontal reverse image output	
Image buffer	128 MB	
Electrical feature		
Data interface	Gigabit Ethernet, compatible with Fast Ethernet	
Digital I/O	12-pin Hirose connector provides power and I/O, including opto-isolated input × 1 (Line 0), opto-isolated output × 1 (Line 1), bi-directional non-isolated I/O × 1 (Line 2), and RS-232 × 1	
Power supply	Switching power supply or power adapter of 12 VDC, 2 A	
Power consumption	Typ. 12 W@12 VDC	
Mechanical		
Lens mount	M58*0.75, optical back focal length 11.48 mm, supports C-mount or F-mount via lens adapter	
Dimension	M58-mount with fan: 74 mm × 74 mm × 75.3 mm (2.9" × 2.9" × 3.0") M58-mount without fan: 74 mm × 74 mm × 47.5 mm (2.9" × 2.9" × 1.9")	
Weight	M58-mount with fan: approx. 450 g (1.0 lb.) M58-mount without fan: approx. 410 g (0.9 lb.)	
Ingress protection	IP40 (under proper lens installation and wiring)	
Temperature	Working temperature: 0 °C to 50 °C (32 °F to 122 °F) Storage temperature: -30 °C to 70 °C (-22 °F to 158 °F)	
Humidity	20% to 95% RH, non-condensing	
General		
Client software	MVS or third-party software meeting with GigE Vision Protocol	
Operating system	32/64-bit Windows XP/7/10, 32/64-bit Linux and 64-bit MacOS	
Compatibility	GigE Vision V1.2, GenICam	
Certification	CE, FCC, RoHS, KC	

HIKROBOT

Hangzhou Hikrobot Technology Co., Ltd.
No.399 Danfeng Road, Binjiang District, Hangzhou 310051, China.
en.hikrobotics.com

Copyright Hikrobot

Hangzhou Hikrobot Technology Co., Ltd. All Rights Reserved. Hangzhou Hikrobot Technology does not tolerate any infringement. Any organization or individual may not imitate or reproduce in whole or in part of the content. The data herein is based on Hikrobot's internal evaluation. Actual data may vary depending on specific configuration and operating condition. The information herein is subject to change without notice. All the content has been checked conscientiously. Nevertheless, Hikrobot shall not be liable to damages resulting from errors, inconsistencies or omissions.