

MV-CH430-90XM

43 MP CMOS CoaXPress Area Scan Camera



GEN*i*CAM

CoaXPress®

Introduction

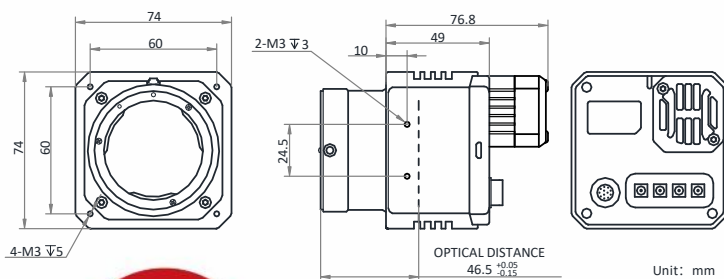
MV-CH430-90XM camera adopts GMAX0806 sensor to provide high-quality image. It uses CoaXPress interface to transmit non-compressed images in real time. With high dynamic range and signal-noise ratio, the camera is an ideal selection for detecting boards.

Key Feature

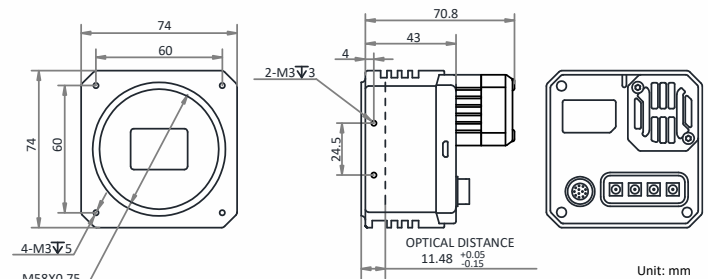
- Resolution of 7904 × 5432, and pixel size of 2.8 μm × 2.8 μm.
- Adopts global shutter CMOS to provide high dynamic range, SNR, and high-quality image.
- Supports PRNU and FPN.
- Adopts CXP-6 interface to transmit data.
- Compatible with CoaXPress Protocol and GenICam Standard.

Dimension

F-mount with fan:



M58-mount with fan:



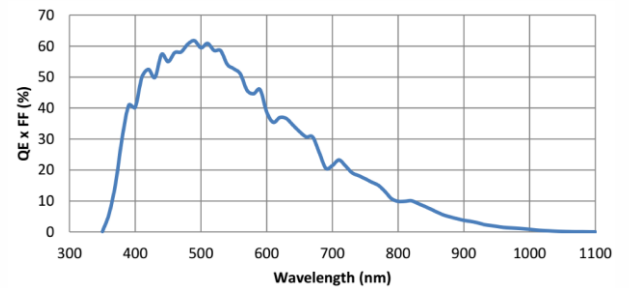
Available Model

- M58-mount with fan, mono camera: MV-CH430-90XM-M58S-NF
- F-mount with fan, mono camera: MV-CH430-90XM-F-NF

Applicable Industry

PCB AOI, FPD, high-accuracy measurement, railway related application, etc.

Sensor Quantum Efficiency



Specification

Model	MV-CH430-90XM
Camera	
Sensor type	CMOS, global shutter
Sensor model	GMAX0806
Pixel size	2.8 μm \times 2.8 μm
Sensor size	22.16 mm \times 15.22 mm
Resolution	7904 \times 5432
Max. frame rate	4 CH (6.25 Gbps): 16.35 fps @7904 \times 5432
	2 CH (6.25 Gbps): 16.35 fps @7904 \times 5432
	1 CH (6.25 Gbps): 13 fps @7904 \times 5432
Dynamic range	69 dB
SNR	39 dB
Gain	2.0 x to 6.0 x
Exposure time	12 μs to 2 sec
Exposure mode	Off/Once/Continuous exposure mode
Mono/color	Mono
Pixel format	Mono 8/10/12
Binning	Not support
Decimation	Not support
Reverse image	Supports horizontal and vertical reverse image output
Electrical feature	
Data interface	CoaXPress (DIN interface)
Digital I/O	12-pin Hirose connector provides I/O: opto-isolated input \times 1 (Line 0), opto-isolated output \times 1 (Line 1), bi-directional non-isolated I/O \times 1 (Line 2), and RS-232 \times 1.
Power supply	9 VDC to 24 VDC
Power consumption	Typ. 7.2 W@12 VDC
Mechanical	
Lens mount	F-Mount: optical back focal length 46.5 mm (1.8") M58-Mount: optical back focal length 11.48 mm (0.5")
Dimension	F-Mount with fan: 74 mm \times 74 mm \times 76.8 mm (2.9" \times 2.9" \times 3.0") M58-Mount with fan: 74 mm \times 74 mm \times 70.8 mm (2.9" \times 2.9" \times 2.8")
Weight	F-Mount with fan: approx. 650 g (1.4 lb.) M58-Mount with fan: approx. 540 g (1.2 lb.)
Ingress protection	IP40 (under proper lens installation and wiring)
Temperature	Working temperature: 0 $^{\circ}\text{C}$ to 50 $^{\circ}\text{C}$ (32 $^{\circ}\text{F}$ to 122 $^{\circ}\text{F}$) Storage temperature: -30 $^{\circ}\text{C}$ to 70 $^{\circ}\text{C}$ (-22 $^{\circ}\text{F}$ to 158 $^{\circ}\text{F}$)
Humidity	20% to 95% RH, non-condensing
General	
Client software	Frame grabber software meeting with CoaXPress Protocol
Operating system	32/64-bit Windows 7/10 with 8 GB memory or above
Compatibility	CoaXPress, GenICam
Certification	CE, FCC, RoHS

HIKROBOT

Hangzhou Hikrobot Technology Co., Ltd.

No.399 Danfeng Road, Binjiang District, Hangzhou 310051, China.

en.hikrobotics.com

Copyright Hikrobot

Hangzhou Hikrobot Technology Co., Ltd. All Rights Reserved. Hangzhou Hikrobot Technology does not tolerate any infringement. Any organization or individual may not imitate or reproduce in whole or in part of the content. The data herein is based on Hikrobot's internal evaluation. Actual data may vary depending on specific configuration and operating condition. The information herein is subject to change without notice. All the content has been checked conscientiously. Nevertheless, Hikrobot shall not be liable to damages resulting from errors, inconsistencies or omissions.