

MV-CH430-61CM-F-TF

43 MP CCD Camera Link Area Scan Camera



GEN*i*CAM

CAMERA
Link

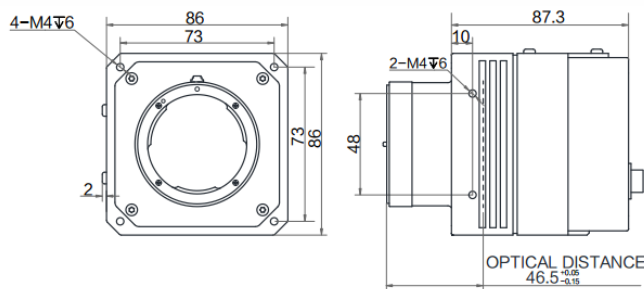
Introduction

MV-CH430-61CM-F-TF is a high-end area scan camera of the CH series. It adopts Kodak CCD sensor and provides high quality image. The camera features the unique cooling technology that ensures long-time exposure of the device.

Key Feature

- Resolution of 8032×5360 and pixel size of $4.5 \mu\text{m} \times 4.5 \mu\text{m}$.
- Global shutter CCD, high dynamic range and signal-to-noise ratio, high image quality.
- Supports configuration modes of Base and Medium via the Camera Link interface.
- Adopts unique cooling technology.
- On-board tap balance and flat field correction.

Dimension



Unit: mm

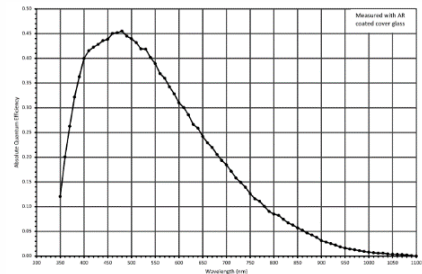
Available Model

Mono camera: MV-CH430-61CM-F-TF

Applicable Industry

SMT/PCB AOI, FPD, display screen detection, etc.

Sensor Quantum Efficiency



Specification

Model	MV-CH430-61CM-F-TF	
Camera		
Sensor type	CCD, global shutter	
Sensor model	KAI-43140	
Pixel size	4.5 μm × 4.5 μm	
Sensor size	36 mm × 24 mm	
Resolution	8032 × 5360	
Configuration mode	Base	Medium
Tap geometry	1X_2YE	1X2_2YE
Tap number	2 Taps	4 Taps
Max. frame rate	3.64 fps @8032 × 5360	
Pixel clock	85 MHZ	
Dynamic range	60 dB	
SNR	40 dB	
Gain	0 dB to 20 dB	
Exposure time	100 μs to 2 sec	
Mono/color	Mono	
Pixel format	Mono 8/10/12	
Exposure mode	Off/ Once/ Continuous exposure mode	
Binning	Supports 1 × 1, 1 × 2, 2 × 1, 2 × 2	
Decimation	Not support	
Reverse image	Supports horizontal reverse image output	
Electrical feature		
Data interface	Camera Link with SDR interface	
Digital I/O	12-pin Hirose connector provides power and I/O, including opto-isolated input × 1 (Line 0), opto-isolated output × 1 (Line 1), bi-directional non-isolated I/O × 1 (Line 2), RS-232 × 1	
Power supply	22 VDC to 26 VDC	
Power consumption	Typ. 16 W@24 VDC (non-TEC cooling mode)	
	Typ. 60 W@24 VDC (TEC cooling mode)	
Mechanical		
Lens mount	F-Mount, optical back focal length: 46.5 mm	
Dimension	86 mm × 86 mm × 87.3 mm (3.4" × 3.4" × 3.4")	
Weight	Approx. 900 g (1.98 lb)	
Ingress protection	IP40 (under proper lens installation and wiring)	
Temperature	Working temperature: 0 °C to 50 °C (32 °F to 122 °F) Storage temperature: -30 °C to 70 °C (-22 °F to 158 °F)	
Humidity	20% to 95% RH, non-condensing	
General		
Client software	MVS or frame grabber software meeting with GenICam Protocol	
Operating system	32/64-bit Windows XP/7/10	
Compatibility	Camera Link V2.0, GenICam	
Certification	CE, FCC, RoHS, KC	

HIKROBOT

Hangzhou Hikrobot Technology Co., Ltd.
No.399 Danfeng Road, Binjiang District, Hangzhou 310051, China.
en.hikrobotics.com

Copyright Hikrobot

Hangzhou Hikrobot Technology Co., Ltd. All Rights Reserved. Hangzhou Hikrobot Technology does not tolerate any infringement. Any organization or individual may not imitate or reproduce in whole or in part of the content. The data herein is based on Hikrobot's internal evaluation. Actual data may vary depending on specific configuration and operating condition. The information herein is subject to change without notice. All the content has been checked conscientiously. Nevertheless, Hikrobot shall not be liable to damages resulting from errors, inconsistencies or omissions.