

# MV-CE060-10UM/UC

6 MP 1/1.8" CMOS USB3.0 Area Scan Camera



GEN*i*CAM

US3™  
VISION

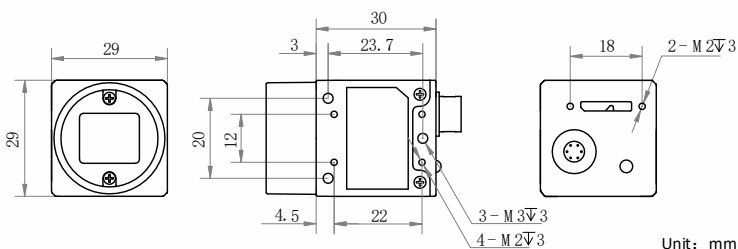
## Introduction

MV-CE060-10UM/UC camera adopts Sony® IMX178 sensor to provide high-quality image. It uses USB3.0 interface to transmit non-compressed images in real time, and its max. frame rate can reach 42.7 fps in full resolution.

## Key Feature

- Supports auto and manual adjustment for gain, exposure control, LUT, Gamma correction, etc.
- Supports hardware triggering, software triggering and free run mode.
- Adopts M2 screw holes for securing cable that connects USB3.0 interface.
- Compatible with USB3 Vision Protocol, GenICam Standard, and the third-party software based on these protocol and standard.

## Dimension



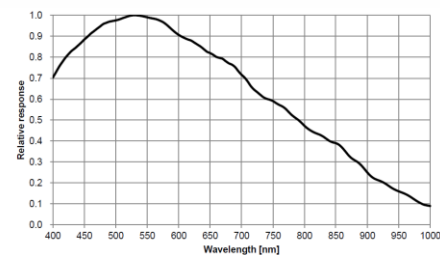
## Available Model

- Mono camera: MV-CE060-10UM
- Color camera: MV-CE060-10UC

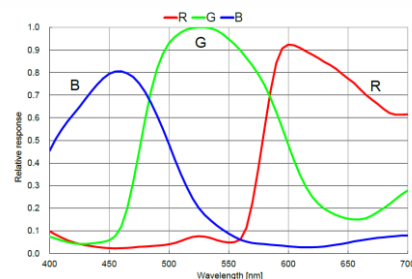
## Applicable Industry

Electronic semiconductor, factory automation, logistics, liquor and beverage, medicine packing, etc.

## Sensor Quantum Efficiency



MV-CE060-10UM



MV-CE060-10UC



## Specification

Model	MV-CE060-10UM	MV-CE060-10UC
Camera		
Sensor type	CMOS, rolling shutter	
Sensor model	Sony® IMX178	
Pixel size	2.4 μm × 2.4 μm	
Sensor size	1/1.8"	
Resolution	3072 × 2048	
Max. frame rate	42.7 fps @3072 × 2048	
Dynamic range	71.3 dB	
SNR	41.3 dB	
Gain	0 dB to 20 dB	
Exposure time	16 μs to 1 sec	24 μs to 1 sec
Exposure mode	Off/Once/Continuous exposure mode, supports Global Reset, Trigger Rolling, and Rolling	
Mono/color	Mono	Color
Pixel format	Mono 8/10/10p/12/12p	Mono 8/10/12, Bayer RG 8/10/10p/12/12p, YUV422_YUYV_Packed, YUV 422 Packed, RGB8, BGR8
Binning	Supports 1 × 1, 2 × 2	
Decimation	Not support	
Reverse image	Supports horizontal reverse image output	
Image buffer	128 MB	
Electrical feature		
Data interface	USB3.0, compatible with USB2.0	
Digital I/O	6-pin Hirose connector provides power and I/O, including opto-isolated input × 1 (Line 0), opto-isolated output × 1(Line 1), bi-directional non-isolated I/O × 1 (Line 2)	
Power supply	12 VDC, supports USB3.0 power supply	
Power consumption	Typ. 2.7 W@5 VDC (USB3.0 provides power supply)	
Mechanical		
Lens mount	C-Mount	
Dimension	29 mm × 29 mm × 30 mm (1.1" × 1.1" × 1.2")	
Weight	Approx. 56 g (0.12 lb.)	
Ingress protection	IP30 (under proper lens installation and wiring)	
Temperature	Working temperature: 0 °C to 50 °C (32 °F to 122 °F) Storage temperature: -30 °C to 70 °C (-22 °F to 158 °F)	
Humidity	20% to 80% RH, non-condensing	
General		
Client software	MVS or third-party software meeting with USB3.0 Vision Protocol	
Operating system	32/64-bit Windows XP/7/10, 32/64-bit Linux and 64-bit MacOS	
Compatibility	USB3 Vision, GenICam	
Certification	CE, FCC, RoHS, KC	

# HIKROBOT

Hangzhou Hikrobot Technology Co., Ltd.  
No.399 Danfeng Road, Binjiang District, Hangzhou 310051, China.  
en.hikrobotics.com

Copyright Hikrobot

Hangzhou Hikrobot Technology Co., Ltd. All Rights Reserved. Hangzhou Hikrobot Technology does not tolerate any infringement. Any organization or individual may not imitate or reproduce in whole or in part of the content. The data herein is based on Hikrobot's internal evaluation. Actual data may vary depending on specific configuration and operating condition. The information herein is subject to change without notice. All the content has been checked conscientiously. Nevertheless, Hikrobot shall not be liable to damages resulting from errors, inconsistencies or omissions.