

# MV-CA060-10GM/GC

6 MP 1/1.8" CMOS GigE Area Scan Camera



GEN< i >CAM

GigE  
VISION

## Introduction

MV-CA060-10GM/GC camera adopts Sony® IMX178 sensor to provide high-quality image. It uses GigE interface to transmit non-compressed images in real time with max. frame rate reaching 17 fps.

## Key Feature

- Adopts GigE interface and max. transmission distance of 100 meters without relay.
- Up to 128 MB local memory for burst transmission and retransmission.
- Supports auto exposure control, LUT, Gamma correction, etc.
- Supports hardware trigger, software trigger, etc.
- Compatible with GigE Vision V1.2 Protocol and the third-party software based on the protocol.

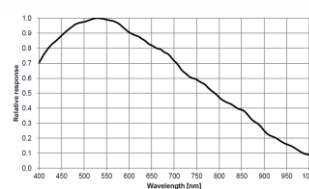
## Available Model

- Mono camera: MV-CA060-10GM
- Color camera: MV-CA060-10GC

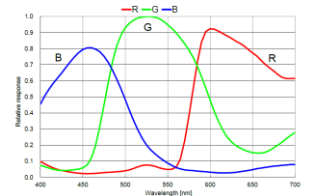
## Applicable Industry

Electronic semiconductor, factory automation, logistic code reading, medical packaging, etc.

## Sensor Quantum Efficiency

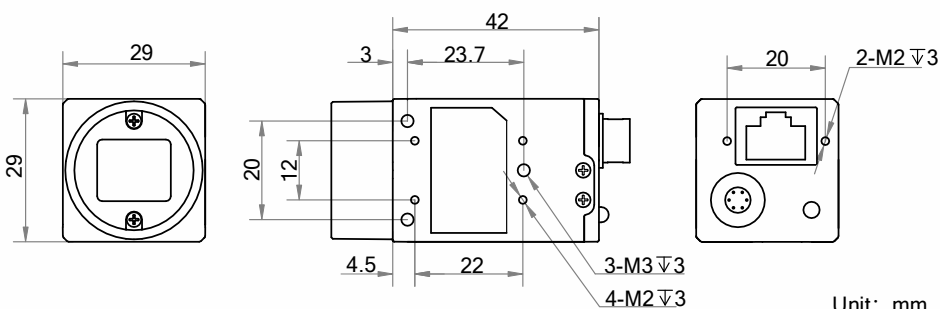


MV-CA060-10GM



MV-CA060-10GC

## Dimension



Unit: mm



## Specification

Model	MV-CA060-10GM	MV-CA060-10GC
Camera		
Sensor type	CMOS, rolling shutter	
Sensor model	Sony® IMX178	
Pixel size	2.4 μm × 2.4 μm	
Sensor size	1/1.8"	
Resolution	3072 × 2048	
Max. frame rate	17 fps @3072 ×2048	
Dynamic range	71.3 dB	
SNR	41.3 dB	
Gain	0 dB to 20 dB	
Exposure time	27 μs to 2.5 sec	
Exposure mode	Off/Once/Continuous exposure mode, supports Global Reset	
Mono/color	Mono	Color
Pixel format	Mono 8/10/10p/12/12p	Mono8/10/12, Bayer RG 8/10/10p/12/12p, YUV 422 8 UYVY, YUV 422 8, RGB 8
Binning	Supports 1 × 1, 2 × 2	
Decimation	Not support	
Reverse image	Supports horizontal reverse image output	
Image buffer	128 MB	
Electrical feature		
Data interface	Gigabit Ethernet, compatible with Fast Ethernet	
Digital I/O	6-pin Hirose connector provides power and I/O, including opto-isolated input × 1 (Line 0), opto-isolated output × 1 (Line 1), bi-directional non-isolated I/O × 1 (Line 2).	
Power supply	12 VDC, supports PoE	
Power consumption	Typ. 3.5 W@12 VDC	
Mechanical		
Lens mount	C-Mount	
Dimension	29 mm × 29 mm × 42 mm (1.1" × 1.1" × 1.7")	
Weight	Approx. 68 g (0.15 lb.)	
Ingress protection	IP30 (under proper lens installation and wiring)	
Temperature	Working temperature: 0 °C to 50 °C (32 °F to 122 °F) Storage temperature: -30 °C to 70 °C (-22 °F to 158 °F)	
Humidity	20% to 80% RH, non-condensing	
General		
Client software	MVS or third-party software meeting with GigE Vision Protocol	
Operating system	32/64-bit Windows XP/7/10, 32/64-bit Linux and 64-bit MacOS	
Compatibility	GigE Vision V1.2, GenICam	
Certification	CE, FCC, RoHS, KC	

# HIKROBOT

Hangzhou Hikrobot Technology Co., Ltd.

No.399 Danfeng Road, Binjiang District, Hangzhou 310051, China.

en.hikrobotics.com

Copyright Hikrobot

Hangzhou Hikrobot Technology Co., Ltd. All Rights Reserved. Hangzhou Hikrobot Technology does not tolerate any infringement. Any organization or individual may not imitate or reproduce in whole or in part of the content. The data herein is based on Hikrobot's internal evaluation. Actual data may vary depending on specific configuration and operating condition. The information herein is subject to change without notice. All the content has been checked conscientiously. Nevertheless, Hikrobot shall not be liable to damages resulting from errors, inconsistencies or omissions.